



## ***OPERATIONAL TEST COMMAND***

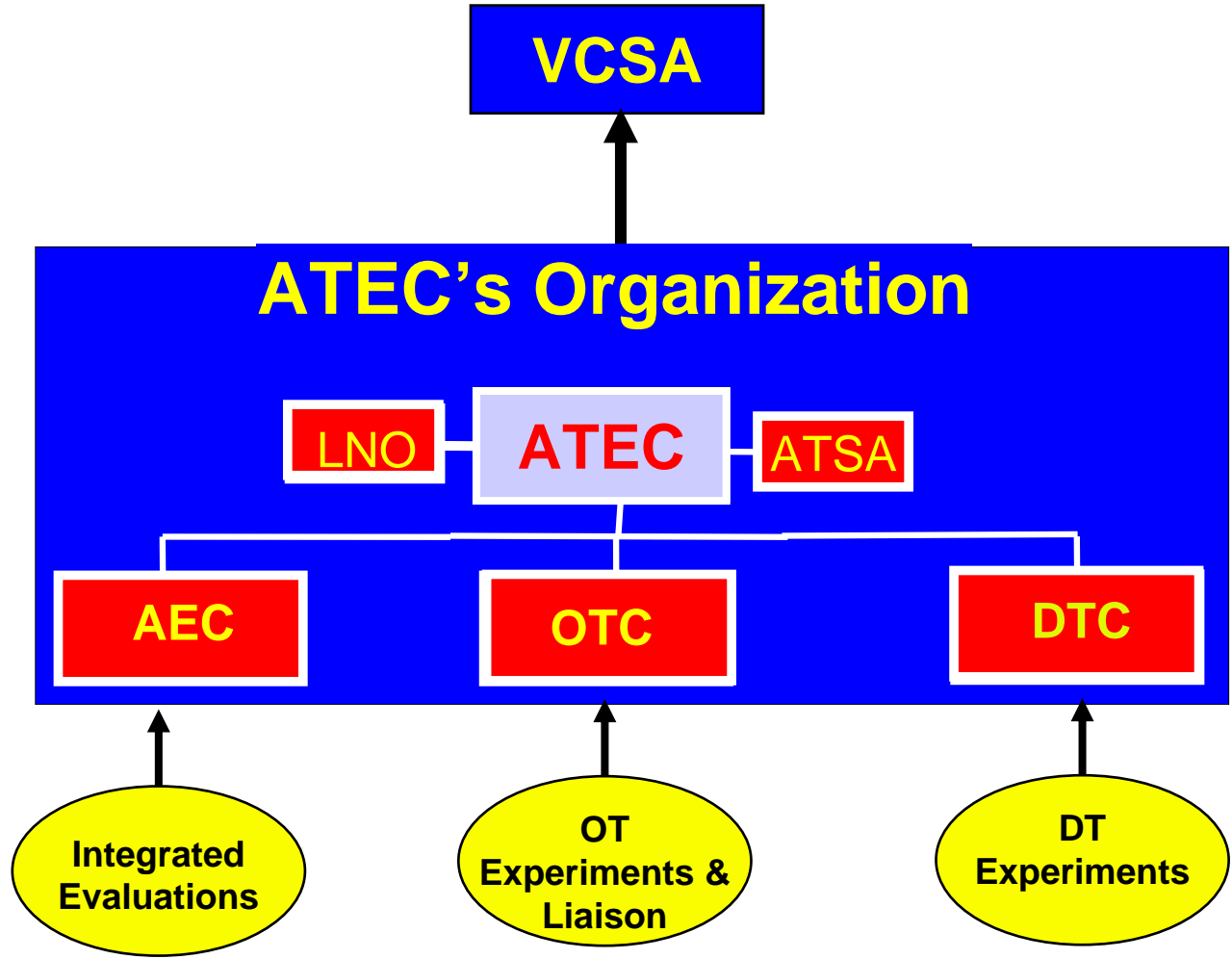
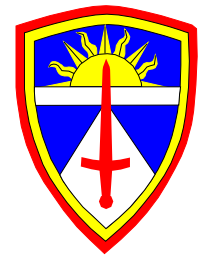


# **Army Operational Testing Supports Homeland Security**

***SETE October 2003***



# ARMY TEST and EVALUATION COMMAND (ATEC)





## *ATEC: Who We Are*

- **Army's Operational Test and Evaluation Agency**
- **Very large and complex T&E organization**
  - ◆ 5000 personnel and 4800 contractors
  - ◆ 28 locations, 17 states
- **Complex and Fully Engaged**
  - ◆ Currently testing and evaluating over 400 systems
  - ◆ 1100 tests events worked daily
  - ◆ \$5 billion capital investment in facilities/instrumentation

*“From Rifles.....To National Missile Defense”*

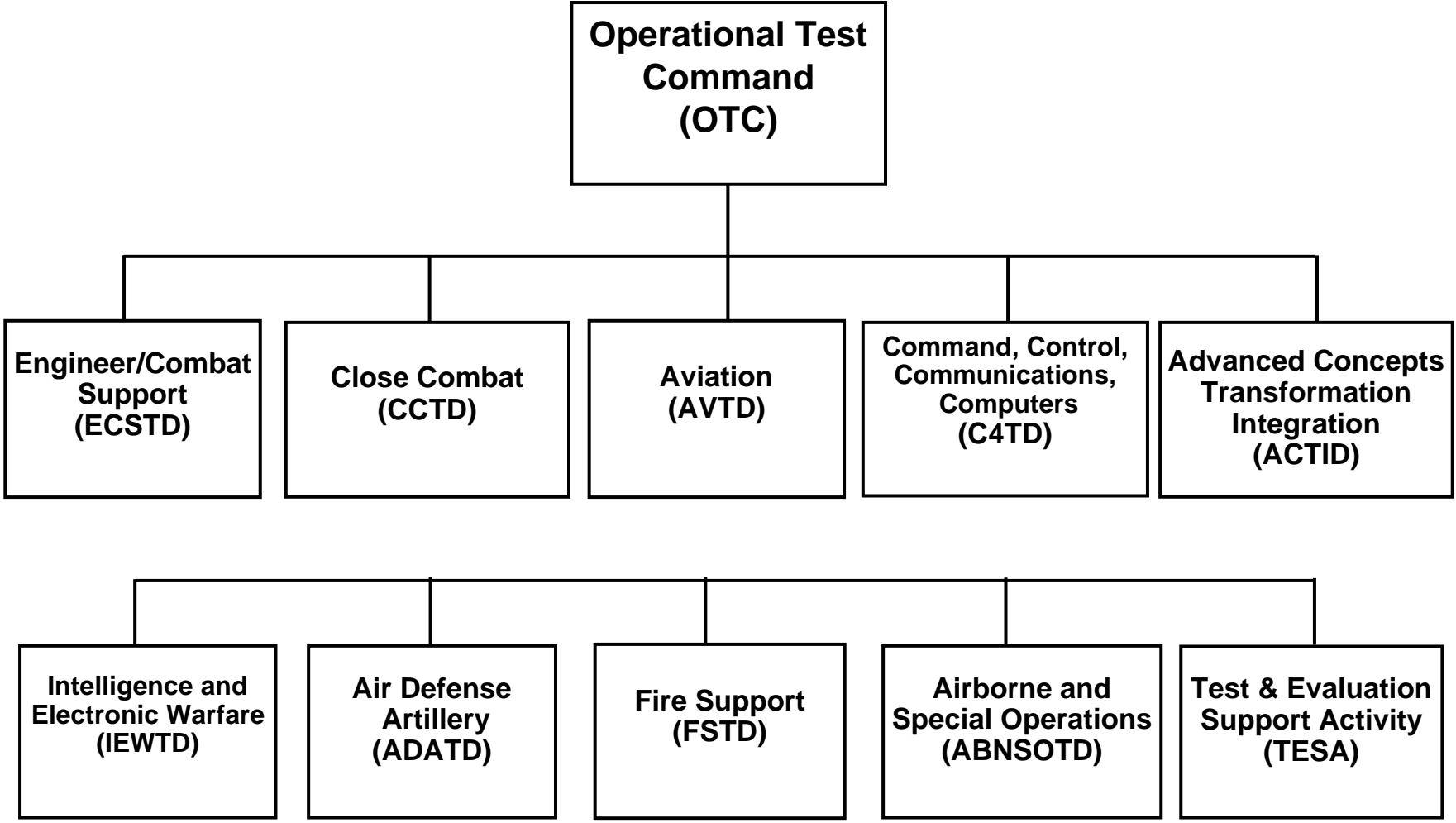


# OTC's Mission

OTC plans and conducts independent operational testing and experiments in order to provide essential information for the decision making process.



# Operational Test Command Workforce





# *Why Do Operational Tests?*



- It's required by law - TITLE 10, USC, SEC 138.
- To field test, under realistic combat conditions, any item or key component of weapons, equipment, or munitions for the purpose of determining the effectiveness and suitability...



# *Support The Materiel Developer*



- Customer Tests
- Limited User Tests
- Initial Operational Tests
- Follow-On Tests



# *DT vs OT*



## **DEVELOPMENTAL TESTING**

***LABORATORY - BENCH TESTING UNDER  
CONTROLLED CONDITIONS***

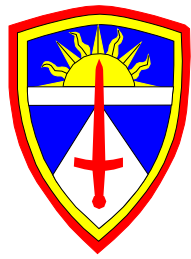
## **OPERATIONAL TESTING**

***PUTS THE "REAL" THING IN THE HANDS OF REAL  
SOLDIERS USING THE ITEM IN WAR-TIME  
SCENARIO SIMULATED COMBAT EXERCISES***



# ***DT vs OT***

## **DIFFERENCES**



### **DT**

### **OT**

- **Controlled by program manager**
- **One-on-one tests**
- **Controlled environment**
- **Contractor involvement**
- **Trained, experienced operator**
- **Precise performance objectives and threshold measurement**
- **Test to specification**
- **Development test article**

- **Controlled by ATEC**
- **Many-on-many tests**
- **Realistic/tactical environment**
- **No system contractor involvement**
- **User troops**
- **Operational effectiveness/suitability**
- **Test to requirement**
- **Production representative test article**



# ***OPERATIONAL TESTING***



**REAL SOLDIERS**

**REAL-LIFE ENVIRONMENT**

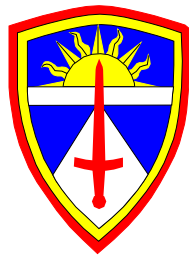
**DOING REAL SOLDIER THINGS**

**REAL-WORLD SCENARIOS**

**PRODUCTION REPRESENTATIVE EQUIPMENT**



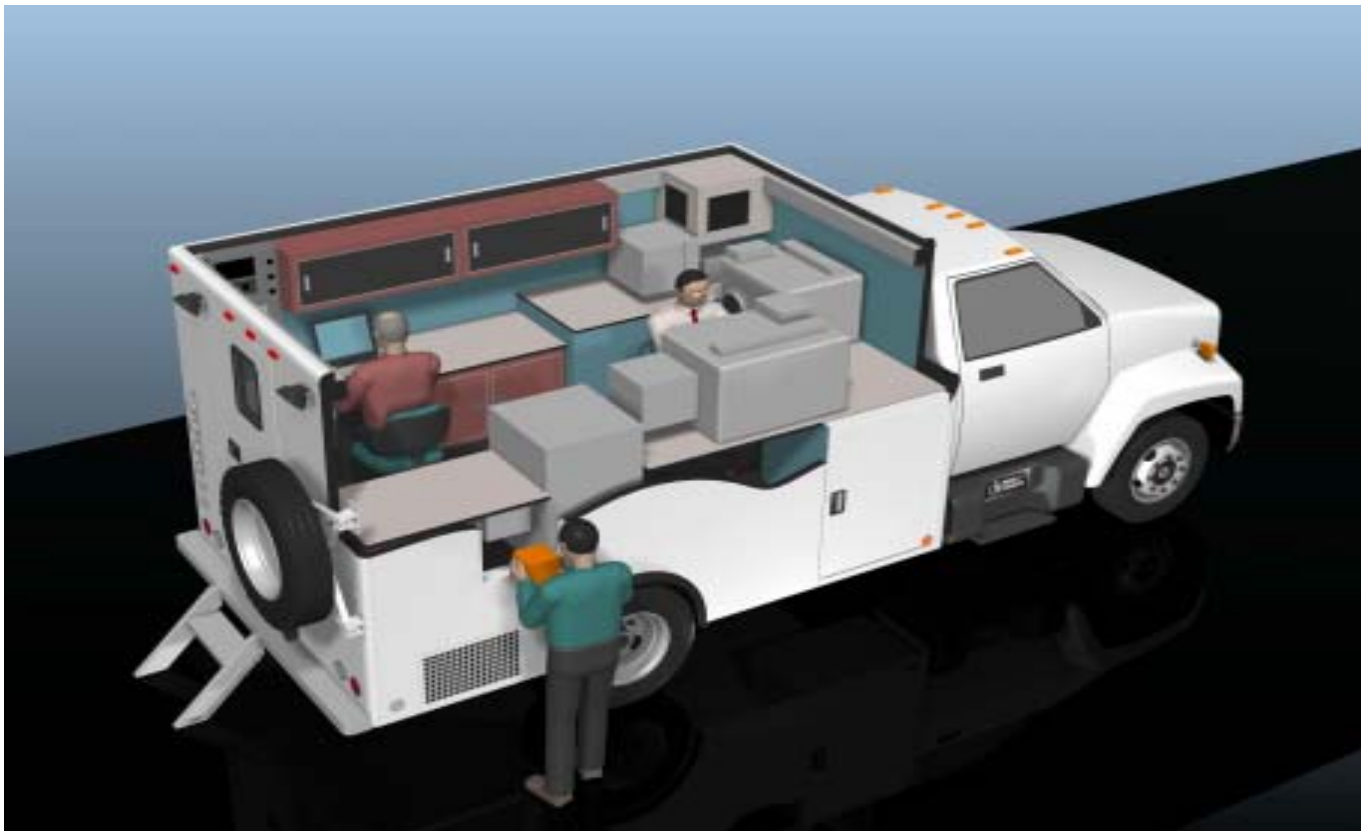
# *ECSTD Systems Under Test*



- *Weapons of Mass Destruction (WMD) Civil Support Team (CST)*
- *Analytical Laboratory System-System Enhancement Program (ALS-SEP)*
- *Nuclear Biological Chemical Reconnaissance Vehicle (NBCRV)*
- *Joint Service Light NBCR System (JSLNBCRS)*
- *Joint Biological Standoff Detection System (JBSDS)*
- *Biological Integrated Detection System (BIDS)*
- *Chemical Biological Protection System (CBPS)*
- *Joint Protective Aircrew Ensemble (JPACE)*
- *Joint Chemical Environmental Survivability Mask (JCESM)*

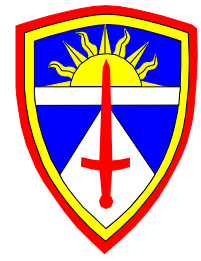


# ALS-SEP



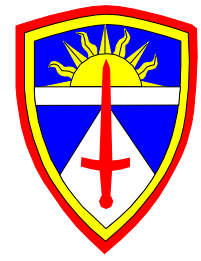


# NBCRV



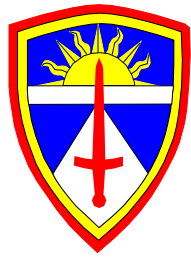


# JSLNBCRS



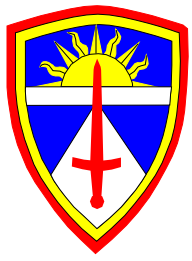


# BIDS



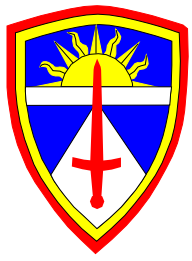


# JPDS





# CBPS





# JPACE





# JCESM

